

# MONTHLY MEMBERSHIP PROGRESS REPORT

LOCATION OHIO

District 13 OH4

Results as of: 3/31/2022

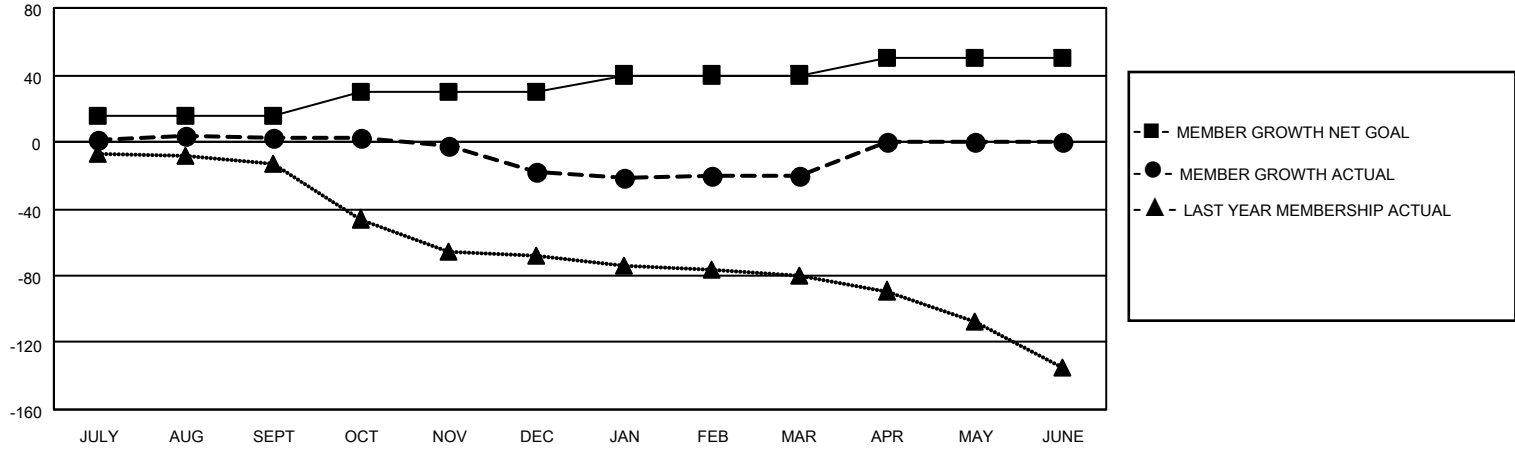
Clubs			
RESULTS FOR 2021-2022			
QUARTER	NEW CLUB GOAL	NEW CLUBS	DROPPED CLUBS
JULY/AUG/SEPT	1	0	0
OCT/NOV/DEC	1	0	1
JAN/FEB/MAR	1	0	0
APR/MAY/JUNE	1	0	0

Members			
RESULTS FOR 2021-2022			
QUARTER	MEMBER GROWTH NET GOAL	MEMBER GROWTH ACTUAL	DROPPED MEMBERS ACTUAL (including transfers)
JULY/AUG/SEPT	15	36	28
OCT/NOV/DEC	15	33	50
JAN/FEB/MAR	10	29	26
APR/MAY/JUNE	10	0	0

**GOALS AND ACTUAL NEW CLUBS CUMULATIVE**



**GOALS AND ACTUAL MEMBERS CUMULATIVE**



DROPPED CLUBS: 1	
<b>DROPPED MEMBERS</b>	
DECEASED	19
CLUB CANCELLED	9
OTHER	76
<b>TOTAL</b>	<b>104</b>

26 CLUBS OF 53 ADDED 1 OR MORE NEW MEMBERS

[CLICK HERE FOR CUMULATIVE MEMBERSHIP DATA](#)

<u>GENDER DISTRIBUTION</u>	
MALE	852 (62.74%)
FEMALE	505 (37.19%)
NON BINARY	0 (0.00%)
PREFER NOT TO ANSWER	1 (0.07%)
TOTAL FAMILY UNIT MEMBERS	
	259
FAMILY MEMBERS PAYING HALF DUES	
	133